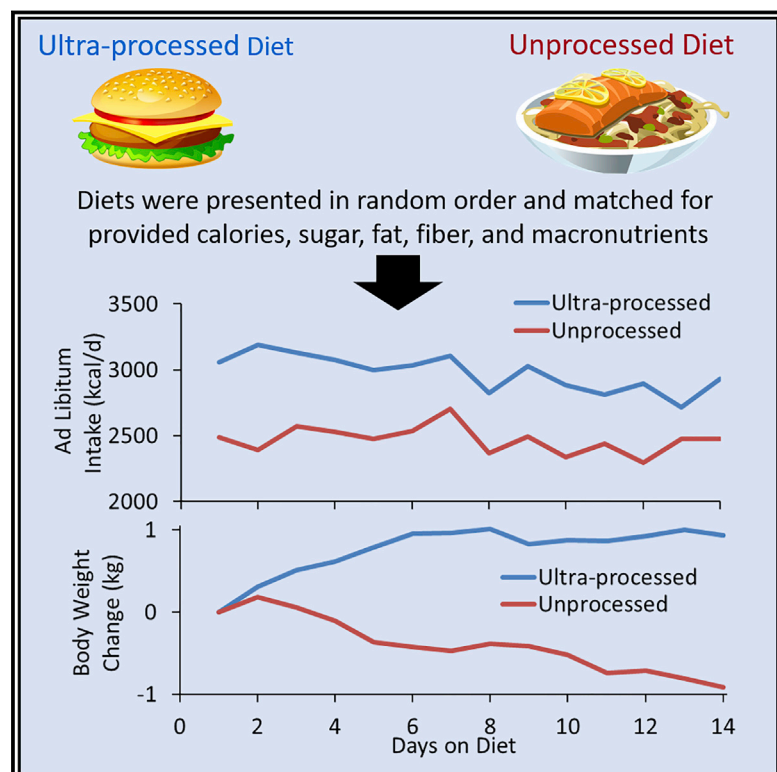


Cell Metabolism

Ultra-Processed Diets Cause Excess Calorie Intake and Weight Gain: An Inpatient Randomized Controlled Trial of *Ad Libitum* Food Intake

Graphical Abstract



Authors

Kevin D. Hall, Alexis Ayuketah, Robert Brychta, ..., Peter J. Walter, Shanna Yang, Megan Zhou

Correspondence

kevinh@nih.gov

In Brief

Hall et al. investigated 20 inpatient adults who were exposed to ultra-processed versus unprocessed diets for 14 days each, in random order. The ultra-processed diet caused increased *ad libitum* energy intake and weight gain despite being matched to the unprocessed diet for presented calories, sugar, fat, sodium, fiber, and macronutrients.

Highlights

- 20 inpatient adults received ultra-processed and unprocessed diets for 14 days each
- Diets were matched for presented calories, sugar, fat, fiber, and macronutrients
- *Ad libitum* intake was ~500 kcal/day more on the ultra-processed versus unprocessed diet
- Body weight changes were highly correlated with diet differences in energy intake



Ultra-Processed Diets Cause Excess Calorie Intake and Weight Gain: An Inpatient Randomized Controlled Trial of *Ad Libitum* Food Intake

Kevin D. Hall,^{1,5,*} Alexis Ayuketah,¹ Robert Brychta,¹ Hongyi Cai,¹ Thomas Cassimatis,¹ Kong Y. Chen,¹ Stephanie T. Chung,¹ Elise Costa,¹ Amber Courville,² Valerie Darcey,¹ Laura A. Fletcher,¹ Ciaran G. Forde,⁴ Ahmed M. Gharib,¹ Juen Guo,¹ Rebecca Howard,¹ Paule V. Joseph,³ Suzanne McGehee,¹ Ronald Ouwerkerk,¹ Klaudia Raisingier,² Irene Rozga,¹ Michael Stagliano,¹ Mary Walter,¹ Peter J. Walter,¹ Shanna Yang,² and Megan Zhou¹

¹National Institute of Diabetes and Digestive and Kidney Diseases, Bethesda, MD, USA

²National Institutes of Health Clinical Center, Bethesda, MD, USA

³National Institute of Nursing Research, Bethesda, MD, USA

⁴Singapore Institute for Clinical Sciences, Singapore, Singapore

⁵Lead Contact

*Correspondence: kevinh@nih.gov

<https://doi.org/10.1016/j.cmet.2019.05.008>

SUMMARY

We investigated whether ultra-processed foods affect energy intake in 20 weight-stable adults, aged (mean \pm SE) 31.2 ± 1.6 years and BMI = 27 ± 1.5 kg/m². Subjects were admitted to the NIH Clinical Center and randomized to receive either ultra-processed or unprocessed diets for 2 weeks immediately followed by the alternate diet for 2 weeks. Meals were designed to be matched for presented calories, energy density, macronutrients, sugar, sodium, and fiber. Subjects were instructed to consume as much or as little as desired. Energy intake was greater during the ultra-processed diet (508 ± 106 kcal/day; $p = 0.0001$), with increased consumption of carbohydrate (280 ± 54 kcal/day; $p < 0.0001$) and fat (230 ± 53 kcal/day; $p = 0.0004$), but not protein (-2 ± 12 kcal/day; $p = 0.85$). Weight changes were highly correlated with energy intake ($r = 0.8$, $p < 0.0001$), with participants gaining 0.9 ± 0.3 kg ($p = 0.009$) during the ultra-processed diet and losing 0.9 ± 0.3 kg ($p = 0.007$) during the unprocessed diet. Limiting consumption of ultra-processed foods may be an effective strategy for obesity prevention and treatment.

INTRODUCTION

The perpetual diet wars between factions promoting low-carbohydrate, keto, paleo, high-protein, low-fat, plant-based, vegan, and a seemingly endless list of other diets have led to substantial public confusion and mistrust in nutrition science. While debate rages about the relative merits and demerits of various so-called healthy diets, less attention is paid to the fact that otherwise diverse diet recommendations often share a common piece of advice: avoid ultra-processed foods (Katz and Meller, 2014).

Ultra-processed foods have been described as “formulations mostly of cheap industrial sources of dietary energy and nutrients plus additives, using a series of processes” and containing minimal whole foods (Monteiro et al., 2018). As an alternative to traditional approaches that focus on nutrient composition of the diet, the NOVA (not an acronym) diet classification system considers the nature, extent, and purpose of processing when categorizing foods and beverages into four groups: (1) unprocessed or minimally processed foods, (2) processed culinary ingredients, (3) processed foods, and (4) ultra-processed foods (Monteiro et al., 2018).

While the NOVA system has been criticized as being too imprecise and incomplete to form an adequate basis for making diet recommendations (Gibney, 2018; Gibney et al., 2017; Jones, 2019), Brazil’s national dietary guidelines use the NOVA system and recommend that ultra-processed foods should be avoided (Melo et al., 2015; Moubarac, 2015). However, several attributes

Context and Significance

Increased availability and consumption of ultra-processed foods have been associated with rising obesity prevalence, but scientists have not yet demonstrated that ultra-processed food causes obesity or adverse health outcomes. Researchers at the NIH investigated whether people ate more calories when exposed to a diet composed of ultra-processed foods compared with a diet composed of unprocessed foods. Despite the ultra-processed and unprocessed diets being matched for daily presented calories, sugar, fat, fiber, and macronutrients, people consumed more calories when exposed to the ultra-processed diet as compared to the unprocessed diet. Furthermore, people gained weight on the ultra-processed diet and lost weight on the unprocessed diet. Limiting consumption of ultra-processed food may be an effective strategy for obesity prevention and treatment.



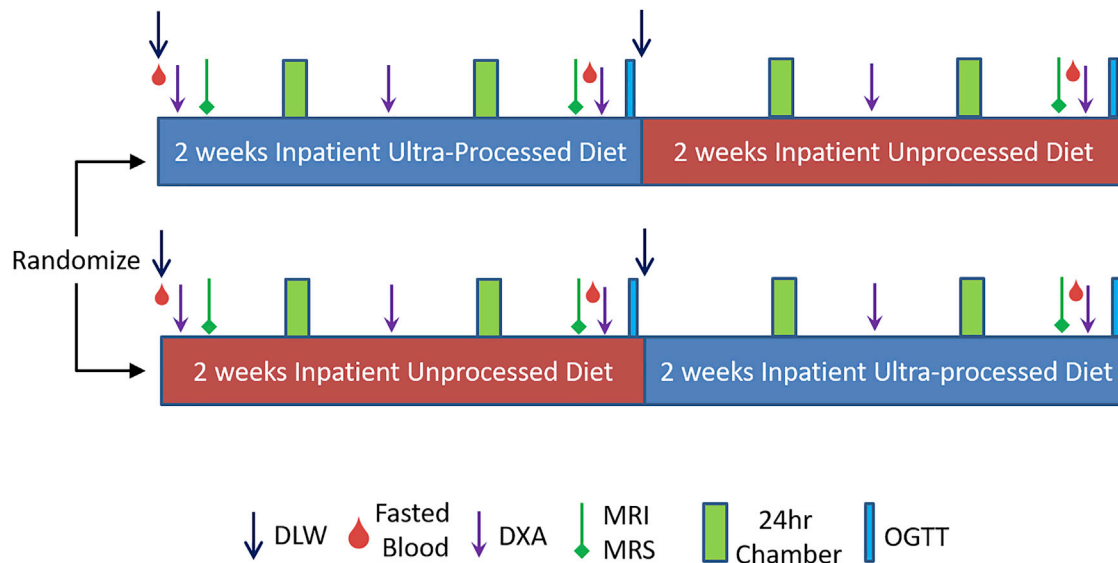


Figure 1. Overview of the Study Design

Twenty adults were confined to the metabolic ward at the NIH Clinical Center, where they were randomized to consumed either an ultra-processed or unprocessed diet for 2 consecutive weeks followed immediately by the alternate diet. Every week, subjects spent 1 day residing in a respiratory chamber to measure energy expenditure, respiratory quotient, and sleeping energy expenditure. Average energy expenditure during each diet period was measured by the doubly labeled water (DLW) method. Body composition was measured by dual-energy X-ray absorptiometry (DXA) and liver fat was measured by magnetic resonance imaging/spectroscopy (MRI/MRS).

of ultra-processed foods make them difficult to replace: they are inexpensive, have long shelf-life, are relatively safe from the microbiological perspective, provide important nutrients, and are highly convenient—often being either ready-to-eat or ready-to heat (Shewfelt, 2017; Weaver et al., 2014).

The rise in obesity and type 2 diabetes prevalence occurred in parallel with an increasingly industrialized food system (Stuckler et al., 2012) characterized by large-scale production of high-yield, inexpensive, agricultural “inputs” (primarily corn, soy, and wheat) that are refined and processed to generate an abundance of “added value” foods (Blatt, 2008; Roberts, 2008). Ultra-processed foods have become more common worldwide (Monteiro et al., 2013; Moubarac, 2015), now constitute the majority of calories consumed in America (Martínez Steele et al., 2016), and have been associated with a variety of poor health outcomes (Fiolet et al., 2018; Mendonça et al., 2016, 2017), including death (Schnabel et al., 2019).

Ultra-processed foods may facilitate overeating and the development of obesity (Poti et al., 2017) because they are typically high in calories, salt, sugar, and fat (Poti et al., 2015) and have been suggested to be engineered to have supernormal appetitive properties (Kessler, 2009; Moss, 2013; Moubarac, 2015; Schatzker, 2015) that may result in pathological eating behavior (Schulte et al., 2015, 2017). Furthermore, ultra-processed foods are theorized to disrupt gut-brain signaling and may influence food reinforcement and overall intake via mechanisms distinct from the palatability or energy density of the food (Small and DiFeliceantonio, 2019).

As compelling as such theories may be, it is important to emphasize that no causal relationship between ultra-processed food consumption and human obesity has yet been established. In fact, there has never been a randomized controlled trial demonstrating any beneficial effects of reducing ultra-pro-

cessed foods or deleterious effects of increasing ultra-processed foods in the diet. Therefore, to address the causal role of ultra-processed foods on energy intake and body weight change, we conducted a randomized controlled trial examining the effects of ultra-processed versus unprocessed diets on *ad libitum* energy intake.

RESULTS AND DISCUSSION

We admitted 10 male and 10 female weight-stable adults aged (mean \pm SE) 31.2 ± 1.6 years with BMI = 27 ± 1.5 kg/m² (see Table S1 for more detailed demographics and anthropometrics) as inpatients to the Metabolic Clinical Research Unit (MCRU) at the NIH Clinical Center, where they resided for a continuous 28-day period. Subjects were randomly assigned to either the ultra-processed or unprocessed diet for 2 weeks followed immediately by the alternate diet for the final 2 weeks (Figure 1).

During each diet phase, the subjects were presented with three daily meals and were instructed to consume as much or as little as desired. Up to 60 min was allotted to consume each meal. Menus rotated on a 7-day schedule, and the meals were designed to be well matched across diets for total calories, energy density, macronutrients, fiber, sugars, and sodium, but widely differing in the percentage of calories derived from ultra-processed versus unprocessed foods (Table 1) as defined according to the NOVA classification scheme (Monteiro et al., 2018). While we attempted to match several nutritional parameters between the diets, the ultra-processed versus unprocessed meals differed substantially in the proportion of added to total sugar (~54% versus 1%, respectively), insoluble to total fiber (~16% versus 77%, respectively), saturated to total fat (~34% versus 19%), and the ratio of omega-6 to omega-3 fatty acids (~11:1 versus 5:1).

Table 1. Diet Composition of the Average 7-Day Rotating Menu Presented to the Subjects during the Ultra-Processed and Unprocessed Diet Periods

	Ultra-Processed Diet	Unprocessed Diet
Three Daily Meals		
Energy (kcal/day)	3,905	3,871
Carbohydrate (%)	49.2	46.3
Fat (%)	34.7	35.0
Protein (%)	16.1	18.7
Energy density (kcal/g)	1.024	1.028
Non-beverage energy density (kcal/g)	1.957	1.057
Sodium (mg/1,000 kcal)	1,997	1,981
Fiber (g/1,000 kcal)	21.3	20.7
Sugars (g/1,000 kcal)	34.6	32.7
Saturated fat (g/1,000 kcal)	13.1	7.6
Omega-3 fatty acids (g/1,000 kcal)	0.7	1.4
Omega-6 fatty acids (g/1,000 kcal)	7.6	7.2
Energy from unprocessed (%) ^a	6.4	83.3
Energy from ultra-processed (%) ^a	83.5	0
Snacks (Available All Day)		
Energy (kcal/day)	1,530	1,565
Carbohydrate (%)	47.0	50.3
Fat (%)	44.1	41.9
Protein (%)	8.9	7.8
Energy density (kcal/g)	2.80	1.49
Sodium (mg/1,000 kcal)	1,454	78
Fiber (g/1,000 kcal)	12.1	23.3
Sugars (g/1,000 kcal)	24.8	95.9
Saturated fat (g/1,000 kcal)	7.7	4.4
Omega-3 fatty acids (g/1,000 kcal)	0.3	4.0
Omega-6 fatty acids (g/1,000 kcal)	9.6	21.9
Energy from unprocessed (%) ^a	0	100
Energy from ultra-processed (%) ^a	75.9	0
Daily Meals + Snacks		
Energy (kcal/day)	5,435	5,436
Carbohydrate (%)	48.6	47.4
Fat (%)	37.4	37.0
Protein (%)	14.0	15.6
Energy density (kcal/g)	1.247	1.126
Non-beverage energy density (kcal/g)	2.147	1.151
Sodium (mg/1,000 kcal)	1,843	1,428
Fiber (g/1,000 kcal)	18.7	21.4
Sugars (g/1,000 kcal)	31.9	51.0
Saturated fat (g/1,000 kcal)	11.5	6.7
Omega-3 fatty acids (g/1,000 kcal)	0.6	2.2
Omega-6 fatty acids (g/1,000 kcal)	8.1	11.5

Table 1. Continued

	Ultra-Processed Diet	Unprocessed Diet
Energy from unprocessed (%) ^a	4.6	88.1
Energy from ultra-processed (%) ^a	81.3	0

^aThe calculated energy percentages refer to the fraction of diet calories contributed from groups 1 and 4 of the NOVA classification system: (1) unprocessed or minimally processed, (2) processed culinary ingredients, (3) processed foods, and (4) ultra-processed foods

The weekly cost for ingredients to prepare 2,000 kcal/day of ultra-processed meals was estimated to be \$106 versus \$151 for the unprocessed meals as calculated using the cost of ingredients obtained from a local branch of a large supermarket chain. Snacks appropriate to the prevailing diet and bottled water were available throughout each day. The meals plus snacks were provided at an amount equivalent to twice each subject's estimated energy requirements for weight maintenance as calculated by 1.6× resting energy expenditure measured at screening. Details of the diet menus are provided as [Supplemental Information](#).

Food Intake

[Figures 2A](#) and [2B](#) show that metabolizable energy intake was 508 ± 106 kcal/day greater during the ultra-processed diet ($p = 0.0001$). Neither the order of the diet assignment ($p = 0.75$) nor sex ($p = 0.28$) had significant effects on the energy intake differences between the diets. Baseline BMI was not significantly correlated with the energy intake differences between the diets ($r = 0.11$; $p = 0.66$).

During the unprocessed diet, energy intake did not significantly change over time (-7.7 ± 6.4 kcal/day²; $p = 0.23$), whereas there was a significant linear decrease in energy intake during the ultra-processed diet (-25.5 ± 6.4 kcal/day²; $p < 0.0001$) that tended to be different from the unprocessed diet ($p = 0.051$). To partially address the lack of a run-in period before the test diets or a washout period between diets, we compared the final week of each diet period and found that energy intake was 459 ± 105 kcal/day greater during the ultra-processed compared to the unprocessed diet ($p = 0.0003$).

The increased energy intake during the ultra-processed diet resulted from consuming greater quantities of carbohydrate (280 ± 54 kcal/day; $p < 0.0001$) and fat (230 ± 53 kcal/day; $p = 0.0004$), but not protein (-2 ± 12 kcal/day; $p = 0.85$) ([Figure 2B](#)). The remarkable stability of absolute protein intake between the diets, along with the slight reduction in overall protein provided in the ultra-processed versus the unprocessed diet (14% versus 15.6% of calories, respectively) ([Table 1](#)), suggests that the protein leverage hypothesis could partially explain the increase in energy intake with the ultra-processed diet in an attempt to maintain a constant protein intake ([Martinez Steele et al., 2018](#); [Simpson and Raubenheimer, 2005](#)).

Using the mathematical relationship between energy intake changes expected from the observed differences in the protein fraction of the provided diets ([Hall, 2019](#)), we calculated that protein leverage could potentially explain at most ~50% of the observed energy intake differences between the diets, assuming perfect leverage. However, if protein leveraging was at work in

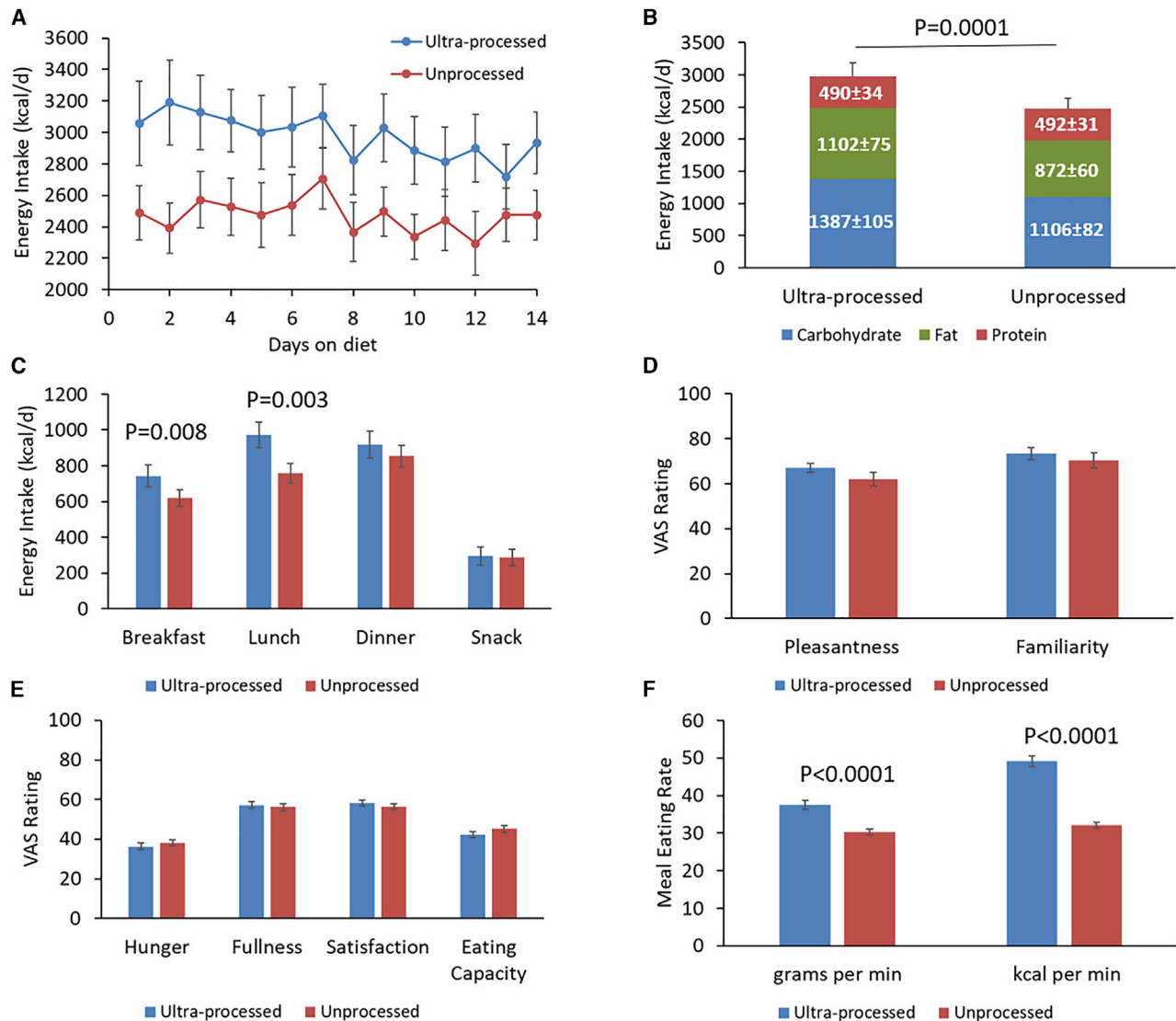


Figure 2. Ad Libitum Food Intake, Appetite Scores, and Eating Rate

(A) Energy intake was consistently higher during the ultra-processed diet. Data are expressed as mean \pm SE.

(B) Average energy intake was increased during the ultra-processed diet because of increased intake of carbohydrate and fat, but not protein. Data are expressed as mean \pm SE, and p values are from paired, two-sided t-tests.

(C) Energy consumed at breakfast and lunch was significantly greater during the ultra-processed diet, but energy consumed at dinner and snacks was not significantly different between the diets. Data are expressed as mean \pm SE, and p values are from paired, two-sided t-tests.

(D) Both diets were rated similarly on visual analog scales (VASs) with respect to pleasantness and familiarity. Data are expressed as mean \pm SE.

(E) Appetitive measures were not significantly different between the diets. Data are expressed as mean \pm SE.

(F) Meal eating rate was significantly greater during the ultra-processed diet. Data are expressed as mean \pm SE, and p values are from paired, two-sided t-tests.

our study, it is unclear why subjects chose to meet their protein targets via compensatory overeating of dietary carbohydrate and fat rather than selecting foods with high protein content. Perhaps within-meal palatability differences between foods or the composite nature of many ultra-processed foods limited the possibility for targeted consumption of higher protein foods without concomitant overeating of carbohydrate and fat during the ultra-processed diet.

Figure 2C illustrates that the ultra-processed diet resulted in increased energy intake at breakfast (124 ± 42 kcal/day; $p =$

0.008) and lunch (213 ± 48 kcal/day; $p = 0.0003$), but there were no significant increases at dinner (66 ± 46 kcal/day; $p = 0.17$) or with snacks (8 ± 46 kcal/day; $p = 0.86$). Carbohydrate intake was significantly increased during the ultra-processed diet at breakfast (67 ± 23 kcal/day; $p = 0.01$) and lunch (114 ± 25 kcal/day; $p = 0.0002$), but not with dinner (35 ± 26 kcal/day; $p = 0.2$) or snacks (-3 ± 25 kcal/day; $p = 0.91$). Fat intake was significantly increased during the ultra-processed diet at breakfast (76 ± 17 kcal/day; $p = 0.0002$), lunch (157 ± 28 kcal/day; $p < 0.0001$), and dinner (53 ± 18 kcal/day; $p = 0.008$), but not

with snacks (8 ± 27 kcal/day; $p = 0.76$). Protein intake was significantly lower during the ultra-processed diet at lunch (-21 ± 6 kcal/day; $p = 0.0015$) but was not significantly different with other meals or snacks ($p > 0.42$).

Whereas sodium intake was significantly increased during the ultra-processed versus the unprocessed diet (5.8 ± 0.2 g/day versus 4.6 ± 0.2 g/day; $p < 0.0001$), there were no significant differences in consumption of total fiber (48.5 ± 2.3 g/day versus 45.8 ± 2.3 g/day; $p = 0.41$) or total sugars (93.3 ± 4.0 g/day versus 96.6 ± 4.0 g/day; $p = 0.57$).

The foods and beverages consumed during the ultra-processed diet had greater energy density than the unprocessed diet (1.36 ± 0.05 kcal/g versus 1.09 ± 0.02 kcal/g; $p = 0.0008$). While the presented ultra-processed and unprocessed meals had similar energy densities (Table 1), this was due to inclusion of beverages as vehicles for the dissolved fiber supplements in the ultra-processed meals that were otherwise low in fiber. However, because beverages have limited ability to affect satiety (DellaValle et al., 2005), the ~85% higher energy density of the non-beverage foods in the ultra-processed versus unprocessed diets (Table 1) likely contributed to the observed excess energy intake (Rolls, 2009).

Appetitive Measurements and Eating Rate

Participants did not report significant differences in the pleasantness (4.8 ± 3.1 ; $p = 0.13$) or familiarity (2.7 ± 4.6 ; $p = 0.57$) of the meals between the ultra-processed and unprocessed diets as measured using 100-point visual analog scales (Figure 2D). This suggests that the observed energy intake differences were not due to greater palatability or familiarity of the ultra-processed diet. Furthermore, differences in the energy intake-adjusted scores for hunger (-1.7 ± 2.5 ; $p = 0.5$), fullness (1.1 ± 2.5 ; $p = 0.67$), satisfaction (1.9 ± 2.4 ; $p = 0.42$), and capacity to eat (-2.9 ± 2.5 ; $p = 0.25$) (Figure 2E) were not significant between the diets, suggesting that they did not differ in their subjective appetitive properties.

Interestingly, Figure 2F illustrates that meal eating rate was significantly greater during the ultra-processed diet whether expressed as kcal/min (17 ± 1 kcal/min; $p < 0.0001$) or g/min (7.4 ± 0.9 g/min; $p < 0.0001$). Individual differences in average eating rate in kcal/min between the ultra-processed and unprocessed diets were moderately correlated with overall energy intake differences ($r = 0.45$; $p = 0.047$).

Previous studies have demonstrated that higher eating rates can result in increased overall energy intake (de Graaf and Kok, 2010; Forde et al., 2013; McCrickerd et al., 2017; Robinson et al., 2014) such that a 20% change in eating rate can impact energy intake by between 10% and 13% (Forde, 2018). Perhaps the oro-sensory properties of the ultra-processed foods (e.g., softer food that was easier to chew and swallow) led to the observed increased eating rate and delayed satiety signaling, thereby resulting in greater overall intake (de Graaf and Kok, 2010). Future studies should examine whether the observed energy intake differences persist when ultra-processed and unprocessed diets are more closely matched for dietary protein and non-beverage energy density while at the same time including ultra-processed foods that are typically eaten slowly.

Body Weight and Composition

Figure 3A illustrates that participants gained 0.9 ± 0.3 kg ($p = 0.009$) during the ultra-processed diet and lost 0.9 ± 0.3 kg ($p = 0.007$) during the unprocessed diet. The individual differences in weight change between the diets were not significantly correlated with baseline BMI ($r = 0.01$; $p = 0.97$), but Figure 3B shows that they were highly correlated with energy intake differences between the diets ($r = 0.8$, $p < 0.0001$).

Body fat mass increased by 0.4 ± 0.1 kg ($p = 0.0015$) during the ultra-processed diet and decreased by 0.3 ± 0.1 kg during the unprocessed diet ($p = 0.05$) (Figure 3C), whereas fat-free mass tended to increase during the ultra-processed diet (0.5 ± 0.3 kg; $p = 0.09$) and decrease during the unprocessed diet (0.6 ± 0.3 kg; $p = 0.08$) (Figure 3D). While the dual-energy X-ray absorptiometry (DXA) methodology used to measure body composition in our study tends to underestimate body fat changes (Pourhassan et al., 2013), the relatively large fat-free mass changes may be due to extracellular fluid shifts associated with differences in sodium intake between the diets. Indeed, individual differences in sodium intake between the diets were significantly correlated with changes in fat-free mass ($r = 0.63$; $p = 0.004$) and body weight ($r = 0.64$; $p = 0.002$). Such fluid shifts may also affect the accuracy and precision of the measured body fat changes (Lohman et al., 2000; Müller et al., 2012).

Thirteen subjects completed measurements of liver fat content by magnetic resonance spectroscopy at baseline and the end of each diet period (Ouwkerk et al., 2012). Baseline liver fat was $1.2\% \pm 0.1\%$ and was not significantly different after the unprocessed diet ($0.95\% \pm 0.1\%$; $p = 0.24$) or the ultra-processed diet ($1.1\% \pm 0.2\%$; $p = 0.74$).

Energy Expenditure, Physical Activity, and Energy Balance

Subjects spent 1 day each week residing in respiratory chambers to measure the components of 24 h energy expenditure. On the chamber days, subjects were presented with identical meals within each diet period, and those meals were not offered on non-chamber days. Table 2 shows that there was no significant difference in energy intake between the diets on the chamber days, but the food quotient differences indicated that subjects consumed relatively more carbohydrate versus fat during the chamber days on the ultra-processed diet. While subjects tended to have greater 24 h energy expenditure during the ultra-processed diet (51 ± 27 kcal/day; $p = 0.06$), there were no significant differences in sleeping energy expenditure, sedentary energy expenditure, or physical activity. These results contrast with a previous study suggesting that energy expenditure was ~60 kcal lower for 6 h following consumption of processed versus unprocessed sandwiches (Barr and Wright, 2010).

The significantly higher 24 h respiratory quotient observed during the ultra-processed diet indicates that fat oxidation was decreased compared to the unprocessed diet. This was likely due to differences in food quotient between ultra-processed and unprocessed diet periods during the chamber days along with differences in energy intake and energy balance on the days prior to the chamber stays.

During the chamber days on the ultra-processed diet, both insulin secretion measured by 24-h urinary C-peptide excretion (38.9 ± 2.8 nmol/day versus 30.9 ± 2.8 nmol/day; $p = 0.052$)

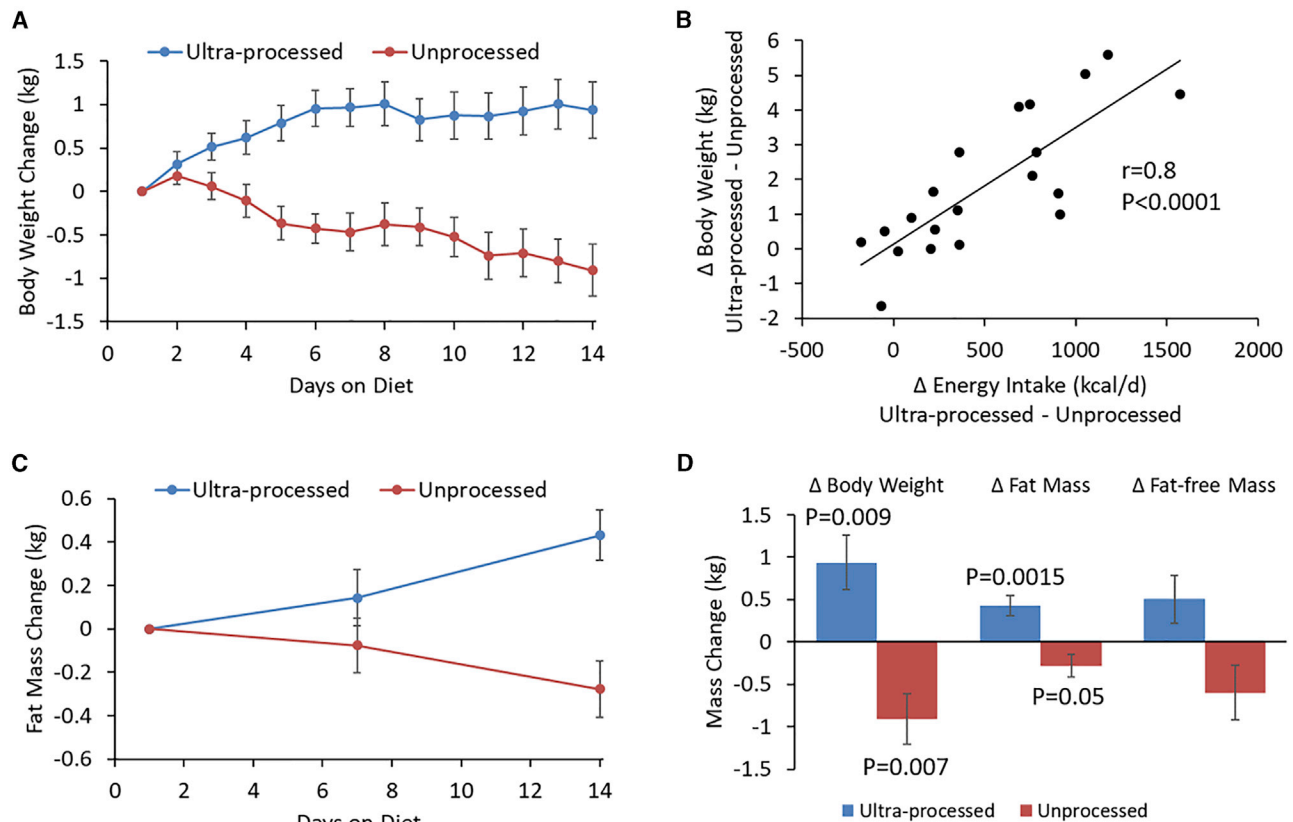


Figure 3. Body Weight and Composition Changes

(A) The ultra-processed diet led to increased body weight over time whereas the unprocessed diet led to progressive weight loss. Data are expressed as mean \pm SE.

(B) Differences in body weight change between the ultra-processed and unprocessed diets were highly correlated with the corresponding energy intake differences. Data are expressed as mean \pm SE.

(C) Body fat mass increased over time with the ultra-processed diet and decreased with the unprocessed diet. Data are expressed as mean \pm SE.

(D) Body weight, body fat, and fat-free mass changes between the beginning and end of each diet period. Data are expressed as mean \pm SE, and p values are from paired, two-sided t-tests.

and average daily glucose levels measured by continuous glucose monitoring (CGM) (99.1 ± 1.3 mg/dL versus 96.0 ± 1.3 mg/dL; $p = 0.10$) tended to be slightly higher compared to the unprocessed diet.

Table 2 reports the average daily energy expenditure as measured by the doubly labeled water (DLW) method during each diet period. The respiratory chamber measurements of energy expenditure were 191 ± 73 kcal/day lower than the DLW measurements during the ultra-processed diet ($p = 0.02$) and not significantly different during the unprocessed diet (-70 ± 75 kcal/day; $p = 0.36$). The ultra-processed diet led to slightly higher energy expenditure by DLW compared to the unprocessed diet (171 ± 56 kcal/day; $p = 0.006$). Since overall physical activity quantified by accelerometry did not detect significant differences between the diet periods (Table 2), the DLW energy expenditure differences were likely due to the differing states of energy balance between the diets.

Energy intake was calculated from the measured foods and beverages consumed using their estimated nutrient composition and metabolizable energy densities. Table 2 shows that energy intake was 417 ± 121 kcal/day ($p = 0.003$) more than energy

expenditure by DLW during the ultra-processed diet in accordance with the observed gain in body weight and fat. However, despite significant body weight and fat loss during the unprocessed diet, energy intake was nominally higher than energy expenditure by DLW by 116 ± 111 kcal/day, but this difference was not statistically significant ($p = 0.31$).

Changes in body energy stores were calculated using the repeated body composition measurements and were found to be increasing by 307 ± 85 kcal/day ($p = 0.002$) during the ultra-processed diet and decreasing by 220 ± 88 kcal/day ($p = 0.02$) during the unprocessed diet. Energy balance calculated as energy intake minus expenditure by DLW was not significantly different from the calculated rate of change of body energy stores during the ultra-processed diet (111 ± 111 kcal/day; $p = 0.33$) but was 382 ± 92 kcal/day ($p = 0.0007$) greater during the unprocessed diet.

The limited precision of the DLW method, with an intrasubject coefficient of variation of $\sim 8\%$ – 15% (Black and Cole, 2000), along with the limited precision and accuracy of measured body composition changes (Lohman et al., 2000; Müller et al., 2012; Pourhassan et al., 2013), may have led to the discrepant

Table 2. Energy Expenditure and Food Intake during the Respiratory Chamber and Doubly Labeled Water Periods

	Ultra-Processed Diet (Week 1)	Ultra-Processed Diet (Week 2)	Ultra-Processed Diet (2-Week Average)	Unprocessed Diet (Week 1)	Unprocessed Diet (Week 2)	Unprocessed Diet (2-Week Average)	p Value ^a
Respiratory Chamber Days							
Energy intake (kcal/day)	2,715 ± 86	2,588 ± 66	2,651 ± 53	2,657 ± 86	2,597 ± 66	2,627 ± 53	0.75
Food quotient	0.850 ± 0.002	0.856 ± 0.003 ^c	0.853 ± 0.002	0.846 ± 0.002	0.843 ± 0.003	0.845 ± 0.002	0.002
Energy expenditure (kcal/day)	2,328 ± 28	2,344 ± 29	2,336 ± 19	2,320 ± 28	2,248 ± 29 ^c	2,284 ± 19	0.056
24 h respiratory quotient	0.907 ± 0.005	0.899 ± 0.005	0.903 ± 0.003	0.875 ± 0.005	0.869 ± 0.005	0.872 ± 0.003	<0.0001
Sleeping energy expenditure (kcal/day)	1,515 ± 28	1,550 ± 33	1,532 ± 19	1,516 ± 27	1,535 ± 33	1,525 ± 19	0.81
Sedentary energy expenditure (kcal/day)	1,590 ± 21	1,573 ± 30	1,581 ± 17	1,549 ± 21	1,530 ± 30	1,540 ± 17	0.084
Physical activity expenditure (kcal/day)	738 ± 29	771 ± 21	755 ± 18	771 ± 29	717 ± 21	744 ± 18	0.67
Doubly Labeled Water Period^b							
Energy intake (kcal/day)	3,099 ± 87	2,865 ± 64 ^c	2,963 ± 74	2,555 ± 82	2,486 ± 64	2,491 ± 74	0.0003
Food quotient	0.851 ± 0.002	0.854 ± 0.002 ^c	0.854 ± 0.002	0.852 ± 0.002	0.856 ± 0.002 ^c	0.855 ± 0.002	0.93
Adjusted respiratory quotient	0.903 ± 0.01	0.902 ± 0.009	0.901 ± 0.007	0.847 ± 0.01	0.836 ± 0.009	0.842 ± 0.007	<0.0001
Daily CO ₂ production (L/day)	468 ± 13	505 ± 19	477 ± 6.9	444 ± 13	388 ± 19	420 ± 6.9	0.0001
Daily energy expenditure (kcal/day)	2,496 ± 83	2,693 ± 80	2,546 ± 39	2,497 ± 79	2,309 ± 85	2,375 ± 39	0.0064
Daily physical activity METs (via accelerometry)	1.502 ± 0.002	1.509 ± 0.003	1.5055 ± 0.002	1.507 ± 0.002	1.505 ± 0.003	1.5065 ± 0.002	0.71

^ap value refers to the comparison between the 2-week average values for ultra-processed versus unprocessed diets
^bN = 19 because one subject's doubly labeled water data failed quality control for the calculated deuterium dilution space
^cp < 0.05 comparing means for week 2 with week 1 within each diet period; mean ± SE

energy balance calculations during the unprocessed diet simply by chance (type-1 error). However, another possibility is that the metabolizable energy content of the unprocessed diet may have been substantially overestimated.

Metabolizable energy content of mixed diets has been shown to decrease at a rate of ~7.2 kcal per gram of total or insoluble fiber intake, whereas intake of soluble fiber (as supplemented during the ultra-processed diet) does not consistently affect metabolizable energy (Baer et al., 1997). Given that subjects consumed ~46 g/day of total fiber during the unprocessed diet, the vast majority of which was insoluble (~77%), the expected decrease in metabolizable energy amounts to ~330 kcal/day, thereby bringing the energy balance calculations into approximate alignment with the measured changes in body energy stores. Of course, this implies that the metabolizable energy intake difference between the ultra-processed and unprocessed diets was even larger than the ~500 kcal/day difference calculated from the nutrient estimates in the measured foods consumed. Future studies should include fecal collections to directly assess digestibility and metabolizable energy intake.

Fasting Blood Measurements

Table 3 presents the fasting blood measurements obtained at baseline and on the final days of the ultra-processed and unprocessed diet periods. Overall, compared to the unprocessed diet, the measurements obtained after the ultra-processed diet were largely unchanged from baseline, suggesting that these subjects likely consumed a habitual diet high in ultra-processed foods,

which might be expected given the high prevalence of ultra-processed food consumption in America (Martínez Steele et al., 2016).

Interestingly, the appetite-suppressing hormone PYY increased during the unprocessed diet as compared with both the ultra-processed diet and baseline. Also, the hunger hormone ghrelin was decreased during the unprocessed diet compared to baseline. The unprocessed diet led to reduced adiponectin, total cholesterol, hsCRP, and total T3, whereas free T4 and free fatty acids were increased compared to baseline. Uric acid decreased after the ultra-processed diet compared with baseline. Triglycerides and HDL cholesterol were significantly decreased compared to baseline after both diets. After the unprocessed diet, fasting glucose and insulin levels tended to decrease compared to baseline, and the homeostasis model assessment of insulin resistance (HOMA-IR) (Matthews et al., 1985) was significantly decreased compared to baseline. There were no significant differences in HOMA-IR after the ultra-processed diet as compared to either baseline or the unprocessed diet.

Glucose Tolerance

Despite substantial differences in energy intake and body weight change between the ultra-processed and unprocessed diets, oral glucose tolerance tests performed at the end of each diet period indicated no significant differences in glucose tolerance (Figures 4A and 4B). Therefore, insulin sensitivity as measured by the Matsuda index (Matsuda and DeFronzo, 1999) was not significantly different between the ultra-processed and unprocessed diets (3.9 ± 0.2 versus 4.5 ± 0.2 , respectively; $p = 0.1$). Furthermore, there were no significant differences in either

Table 3. Fasting Blood Measurements at Baseline and at the End of the Ultra-Processed and Unprocessed Diet Periods

	Baseline	Ultra-Processed Diet	p Value, Ultra-Processed versus Baseline Diet	Unprocessed Diet	p Value, Unprocessed versus Baseline Diet	p Value, Ultra-Processed versus Unprocessed Diet
Leptin (ng/mL)	44.3 ± 1.7	45.1 ± 1.7	0.75	40.4 ± 1.7	0.11	0.058
Active ghrelin (pg/mL)	61.4 ± 3.5	54.1 ± 3.5	0.15	48.3 ± 3.5	0.01	0.24
PYY (pg/mL)	28.9 ± 1.9	25.1 ± 1.9	0.15	34.3 ± 1.9	0.047	0.001
FGF-21 (pg/mL)	397 ± 59	289 ± 59	0.21	362 ± 59	0.67	0.39
Adiponectin (mg/L)	7.3 ± 0.7	8.0 ± 0.7	0.43	4.6 ± 0.7	0.007	0.0007
Resistin (ng/mL)	13.5 ± 0.4	12.4 ± 0.4	0.05	12.1 ± 0.4	0.01	0.49
Active GLP-1 (pg/mL)	1.88 ± 0.19	1.25 ± 0.19	0.027	1.57 ± 0.19	0.26	0.25
Total GIP (pg/mL)	79.7 ± 5.4	67.9 ± 5.4	0.13	64.3 ± 5.4	0.052	0.64
Active GIP (pg/mL)	27.4 ± 2.8	20.0 ± 2.8	0.07	18.2 ± 2.8	0.025	0.65
Glucagon (pmol/L)	12.0 ± 0.8	11.0 ± 0.8	0.42	9.8 ± 0.8	0.07	0.29
Hgb A1C (%)	4.98 ± 0.03	5.02 ± 0.03	0.28	5.00 ± 0.03	0.55	0.64
Glucose (mg/dL)	90.5 ± 0.9	88.6 ± 0.9	0.16	88.0 ± 0.9	0.06	0.62
Insulin (μU/mL)	11.9 ± 0.9	11.3 ± 1.0	0.64	8.9 ± 1.0	0.03	0.09
C-peptide (ng/mL)	2.19 ± 0.06	2.14 ± 0.06	0.62	1.94 ± 0.06	0.01	0.032
HOMA-IR	2.8 ± 0.3	2.5 ± 0.3	0.50	1.9 ± 0.3	0.03	0.14
HOMA-beta	152 ± 10	159 ± 11	0.63	129 ± 10	0.13	0.053
Total cholesterol (mg/dL)	155 ± 3	152 ± 3	0.54	137 ± 3	0.0002	0.001
HDL cholesterol (mg/dL)	58.2 ± 0.8	55.0 ± 0.9	0.01	48.3 ± 0.8	<0.0001	<0.0001
LDL cholesterol (mg/dL)	82 ± 3	84 ± 3	0.61	77 ± 3	0.21	0.085
Triglycerides (mg/dL)	72 ± 3	62 ± 3	0.02	59 ± 3	0.003	0.45
Free fatty acids (μmol/L)	409 ± 40	384 ± 40	0.67	556 ± 40	0.013	0.004
Uric acid (mg/dL)	4.9 ± 0.8	4.5 ± 0.8	0.0007	4.9 ± 0.8	0.55	0.004
TSH (μIU/mL)	2.2 ± 0.1	2.6 ± 0.1	0.054	2.5 ± 0.1	0.24	0.42
Free T3 (pg/mL)	3.17 ± 0.06	3.20 ± 0.06	0.72	3.03 ± 0.06	0.11	0.051
Free T4 (ng/dL)	1.19 ± 0.02	1.22 ± 0.02	0.36	1.27 ± 0.02	0.019	0.13
T3 (ng/dL)	113 ± 2	112 ± 2	0.80	104 ± 2	0.011	0.019
T4 (μg/dL)	6.8 ± 0.1	6.9 ± 0.1	0.70	6.8 ± 0.1	0.91	0.79
PAI-1 (ng/mL)	4.0 ± 0.5	4.6 ± 0.5	0.42	4.7 ± 0.5	0.34	0.89
hsCRP (mg/L)	2.7 ± 0.3	2.4 ± 0.3	0.48	1.5 ± 0.3	0.014	0.072

Mean ± SE.

average daily glucose concentrations or glycemic variability between the diets as measured by daily CGM (Figure 4C).

It is possible that differences in glucose tolerance and insulin sensitivity would have emerged after longer periods on each diet. However, shorter durations of overfeeding have previously been demonstrated to result in rapid impairments in glucose tolerance and insulin sensitivity (Lagerpusch et al., 2012; Walhin et al., 2013), albeit with greater differences in energy intake than the present study.

Another possible explanation is that exercise can prevent changes in insulin sensitivity and glucose tolerance during overfeeding (Walhin et al., 2013). Our subjects performed daily cycle ergometry exercise in three 20-min bouts at a constant intensity corresponding to 30%–40% of each subjects' estimated heart rate reserve. This relatively low-intensity exercise was mandated to avoid the sedentary behavior and de-training that often occurs during inpatient metabolic ward studies. Indeed, the average physical activity level (defined by total energy expenditure by DLW divided by resting energy expenditure) during the inpatient

stay was 1.59 ± 0.06 , which is representative of free-living adults (SACN, 2011). It is intriguing to speculate that perhaps even this modest dose of exercise prevented any differences in glucose tolerance or insulin sensitivity between the ultra-processed and unprocessed diets.

In conclusion, our data suggest that eliminating ultra-processed foods from the diet decreases energy intake and results in weight loss, whereas a diet with a large proportion of ultra-processed food increases energy intake and leads to weight gain. Whether reformulation of ultra-processed foods could eliminate their deleterious effects while retaining their palatability and convenience is unclear. Until such reformulated products are widespread, limiting consumption of ultra-processed foods may be an effective strategy for obesity prevention and treatment. Such a recommendation could potentially be embraced across a wide variety of healthy dietary approaches including low-carb, low-fat, plant-based, or animal-based diets. However, policies that discourage consumption of ultra-processed foods should be sensitive to the time, skill, expense, and effort required

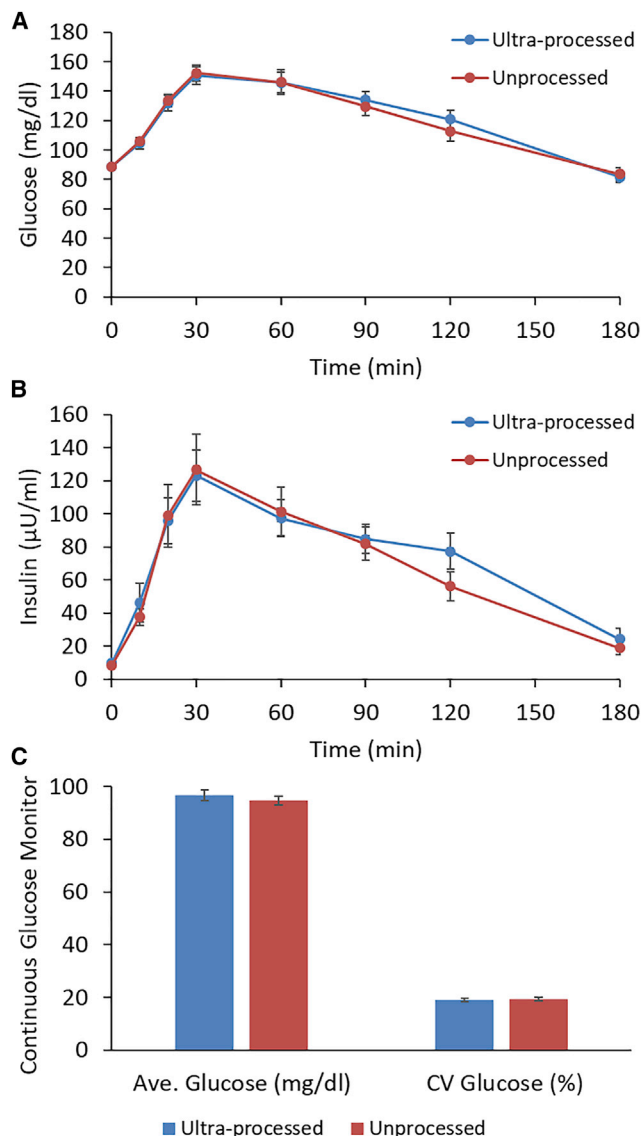


Figure 4. Glucose Tolerance and Continuous Glucose Monitoring
 (A) Glucose concentrations following a 75 g oral glucose tolerance test (OGTT) were not significantly different between the diets. Data are expressed as mean \pm SE.
 (B) Insulin concentrations following the OGTT were not significantly different between the diets. Data are expressed as mean \pm SE.
 (C) Continuous glucose monitoring throughout the study did not detect significant differences in average glucose concentrations or glycemic variability as measured by the coefficient of variation (CV) of glucose. Data are expressed as mean \pm SE.

to prepare meals from minimally processed foods—resources that are often in short supply for those who are not members of the upper socioeconomic classes.

Limitations of Study

Ultra-processed foods are less expensive and more convenient than preparing meals using unprocessed whole foods and culinary ingredients. Because the meals were prepared and presented at no cost to our subjects, and they could not choose their

meals or their mode of presentation, our study did not address how consumer choices between ultra-processed versus unprocessed meals may be influenced by cost and convenience.

Our study was not designed to identify the cause of the observed differences in energy intake. Many of the potential negative effects of ultra-processed foods have been hypothesized to relate to their elevated sugar, fat, and sodium content while being low in protein and fiber (Poti et al., 2017). However, we attempted to match these nutritional variables in the presented meals to investigate whether other aspects of ultra-processed diets contribute to excess energy intake. Had the experimental diets used in our study allowed for greater differences in sugar, fat, and sodium content more typical of differences between ultra-processed versus unprocessed diets, we may have observed larger differences in energy intake.

Our study did not include a weight-maintenance run-in period or a washout period between test diets. These design choices were made to lessen the burden to the subjects and reduce the likelihood of dropouts, which was successful because all 20 subjects who successfully screened for the study also completed. To partially address the lack of run-in or washout periods, we compared *ad libitum* energy intake during the final week of each test diet period and the substantial diet differences persisted. The lack of a run-in period complicates the interpretation of the baseline blood measures in comparison to those obtained at the end of each test diet, and all such diet comparisons were potentially confounded by the substantial differences in energy intake and corresponding weight changes.

Finally, the inpatient environment of the metabolic ward makes it difficult to generalize our results to free-living conditions. However, current dietary assessment methods are insufficient to accurately or precisely measure energy intake outside the laboratory (Schoeller, 1990; Schoeller et al., 2013), and adherence to study diets cannot be guaranteed in free-living subjects. While the 28-day duration of our study was relatively modest, most laboratory-based studies of food intake are typically much shorter in duration, often occurring within a single day of testing with one or two meals (Gibbons et al., 2014).

STAR★METHODS

Detailed methods are provided in the online version of this paper and include the following:

- KEY RESOURCES TABLE
- CONTACT FOR REAGENT AND RESOURCE SHARING
- EXPERIMENTAL MODEL AND SUBJECT DETAILS
- METHOD DETAILS
 - Diets
 - Subjective Assessment of Appetite, Sensory, and Palatability
 - Body Weight and Composition
 - Physical Activity Monitoring
 - Energy Expenditure via Respiratory Chamber
 - Energy Expenditure via Doubly Labeled Water
 - Continuous Glucose Monitoring
- QUANTIFICATION AND STATISTICAL ANALYSIS
- ADDITIONAL RESOURCES
- DATA AND SOFTWARE AVAILABILITY

SUPPLEMENTAL INFORMATION

Supplemental Information can be found online at <https://doi.org/10.1016/j.cmet.2019.05.008>.

ACKNOWLEDGMENTS

This work was supported by the Intramural Research Program of the National Institutes of Health, National Institute of Diabetes and Digestive and Kidney Diseases. We thank the nursing and nutrition staff at the NIH MCRU for their invaluable assistance with this study. We also thank Ms. Shavonne Pocock for taking the photos of the study diets. We are most thankful to the study subjects who volunteered to participate in this demanding protocol.

AUTHOR CONTRIBUTIONS

Conceptualization, K.D.H.; Formal Analysis, K.D.H. and J.G.; Methodology, R.B., K.Y.C., C.G.F., A.M.G., and R.O.; Investigation, A.A., R.B., H.C., T.C., E.C., A.C., V.D., L.A.F., R.H., P.V.J., S.M., K.R., I.R., M.S., M.W., P.J.W., S.Y., and M.Z.; Writing – Original Draft, K.D.H.; Writing – Reviewing & Editing, K.D.H., R.B., A.C., V.D., L.A.F., C.G.F., R.H., P.V.J., S.Y., K.Y.C., and S.T.C.; Supervision, K.D.H. and S.T.C.

DECLARATION OF INTERESTS

C.G.F. has received reimbursement for speaking at conferences sponsored by companies selling nutritional products, serves on the scientific advisory council for Kerry Taste and Nutrition, and is part of an academic consortium that has received research funding from Abbott Nutrition, Nestec, and Danone. The other authors have no conflicts of interest.

Received: February 11, 2019

Revised: April 5, 2019

Accepted: May 2, 2019

Published: May 16, 2019; corrected online: May 29, 2019

REFERENCES

- Baer, D.J., Rumpler, W.V., Miles, C.W., and Fahey, G.C., Jr. (1997). Dietary fiber decreases the metabolizable energy content and nutrient digestibility of mixed diets fed to humans. *J. Nutr.* *127*, 579–586.
- Barr, S.B., and Wright, J.C. (2010). Postprandial energy expenditure in whole-food and processed-food meals: implications for daily energy expenditure. *Food Nutr. Res.* *54*, <https://doi.org/10.3402/fnr.v54i0.5144>.
- Bhutani, S., Racine, N., Shriver, T., and Schoeller, D.A. (2015). Special considerations for measuring energy expenditure with doubly labeled water under atypical conditions. *J. Obes. Weight Loss Ther.* *5* (Suppl 5), 002.
- Black, A.E., and Cole, T.J. (2000). Within- and between-subject variation in energy expenditure measured by the doubly-labelled water technique: implications for validating reported dietary energy intake. *Eur. J. Clin. Nutr.* *54*, 386–394.
- Blatt, H. (2008). *America's Food: What You Don't Know about What You Eat* (The MIT press).
- Bray, G.A., Flatt, J.P., Volaufova, J., Delany, J.P., and Champagne, C.M. (2008). Corrective responses in human food intake identified from an analysis of 7-d food-intake records. *Am. J. Clin. Nutr.* *88*, 1504–1510.
- de Graaf, C., and Kok, F.J. (2010). Slow food, fast food and the control of food intake. *Nat. Rev. Endocrinol.* *6*, 290–293.
- DellaValle, D.M., Roe, L.S., and Rolls, B.J. (2005). Does the consumption of caloric and non-caloric beverages with a meal affect energy intake? *Appetite* *44*, 187–193.
- Edholm, O.G., Adam, J.M., Healy, M.J., Wolff, H.S., Goldsmith, R., and Best, T.W. (1970). Food intake and energy expenditure of army recruits. *Br. J. Nutr.* *24*, 1091–1107.
- Fiolet, T., Srour, B., Sellem, L., Kesse-Guyot, E., Allès, B., Méjean, C., Deschasaux, M., Fassier, P., Latino-Martel, P., Beslay, M., et al. (2018). Consumption of ultra-processed foods and cancer risk: results from NutriNet-Santé prospective cohort. *BMJ* *360*, k322.
- Forde, C.G. (2018). From perception to ingestion; The role of sensory properties in energy selection, eating behaviour and food intake. *Food Qual. Prefer.* *66*, 171–177.
- Forde, C.G., van Kuijk, N., Thaler, T., de Graaf, C., and Martin, N. (2013). Texture and savoury taste influences on food intake in a realistic hot lunch time meal. *Appetite* *60*, 180–186.
- Freedson, P.S., Melanson, E., and Sirard, J. (1998). Calibration of the Computer Science and Applications, Inc. accelerometer. *Med. Sci. Sports Exerc.* *30*, 777–781.
- Gibbons, C., Finlayson, G., Dalton, M., Caudwell, P., and Blundell, J.E. (2014). Metabolic Phenotyping Guidelines: studying eating behaviour in humans. *J. Endocrinol.* *222*, G1–G12.
- Gibney, M.J. (2018). Ultra-processed foods: definitions and policy issues. *Curr Dev Nutr* *3*, nzy077.
- Gibney, M.J., Forde, C.G., Mullally, D., and Gibney, E.R. (2017). Ultra-processed foods in human health: a critical appraisal. *Am. J. Clin. Nutr.* *106*, 717–724.
- Hall, K.D. (2019). The potential role of protein leverage in the US obesity epidemic. *Obesity* (Silver Spring). <https://doi.org/10.1002/oby.22520>.
- Hall, K.D., Chen, K.Y., Guo, J., Lam, Y.Y., Leibel, R.L., Mayer, L.E., Reitman, M.L., Rosenbaum, M., Smith, S.R., Walsh, B.T., and Ravussin, E. (2016). Energy expenditure and body composition changes after an isocaloric ketogenic diet in overweight and obese men. *Am. J. Clin. Nutr.* *104*, 324–333.
- Hall, K.D., Guo, J., Chen, K.Y., Leibel, R.L., Reitman, M.L., Rosenbaum, M., Smith, S.R., and Ravussin, E. (2019). Methodologic considerations for measuring energy expenditure differences between diets varying in carbohydrate using the doubly labeled water method. *Am. J. Clin. Nutr.* <https://doi.org/10.1093/ajcn/nqy390>.
- Harris, P.A., Taylor, R., Thielke, R., Payne, J., Gonzalez, N., and Conde, J.G. (2009). Research electronic data capture (REDCap)—a metadata-driven methodology and workflow process for providing translational research informatics support. *J. Biomed. Inform.* *42*, 377–381.
- Jones, J.M. (2019). Food processing: criteria for dietary guidance and public health? *Proc. Nutr. Soc.* *78*, 4–18.
- Katz, D.L., and Meller, S. (2014). Can we say what diet is best for health? *Annu. Rev. Public Health* *35*, 83–103.
- Kessler, D.A. (2009). *The End of Overeating: Controlling the Insatiable American Appetite* (Rodale Inc.).
- Lagerpusch, M., Bosy-Westphal, A., Kehden, B., Peters, A., and Müller, M.J. (2012). Effects of brief perturbations in energy balance on indices of glucose homeostasis in healthy lean men. *Int. J. Obes.* *36*, 1094–1101.
- Lohman, T.G., Harris, M., Teixeira, P.J., and Weiss, L. (2000). Assessing body composition and changes in body composition. Another look at dual-energy X-ray absorptiometry. *Ann. N Y Acad. Sci.* *904*, 45–54.
- Martínez Steele, E., Baraldi, L.G., Louzada, M.L., Moubarac, J.C., Mozaffarian, D., and Monteiro, C.A. (2016). Ultra-processed foods and added sugars in the US diet: evidence from a nationally representative cross-sectional study. *BMJ Open* *6*, e009892.
- Martínez Steele, E., Raubenheimer, D., Simpson, S.J., Baraldi, L.G., and Monteiro, C.A. (2018). Ultra-processed foods, protein leverage and energy intake in the USA. *Public Health Nutr.* *21*, 114–124.
- Matsuda, M., and DeFronzo, R.A. (1999). Insulin sensitivity indices obtained from oral glucose tolerance testing: comparison with the euglycemic insulin clamp. *Diabetes Care* *22*, 1462–1470.
- Matthews, D.R., Hosker, J.P., Rudenski, A.S., Naylor, B.A., Treacher, D.F., and Turner, R.C. (1985). Homeostasis model assessment: insulin resistance and beta-cell function from fasting plasma glucose and insulin concentrations in man. *Diabetologia* *28*, 412–419.
- McCrickerd, K., Lim, C.M., Leong, C., Chia, E.M., and Forde, C.G. (2017). Texture-based differences in eating rate reduce the impact of increased energy density and large portions on meal size in adults. *J. Nutr.* *147*, 1208–1217.
- Melo, E.A., Jaime, P.C., Monteiro, C.A., and Nutrition, G.C.F.a. (2015). *Dietary Guidelines for the Brazilian Population* (Ministry of Health of Brazil), p. 152.

- Mendonça, R.D., Pimenta, A.M., Gea, A., de la Fuente-Arillaga, C., Martinez-Gonzalez, M.A., Lopes, A.C., and Bes-Rastrollo, M. (2016). Ultra-processed food consumption and risk of overweight and obesity: the University of Navarra Follow-Up (SUN) cohort study. *Am. J. Clin. Nutr.* *104*, 1433–1440.
- Mendonça, R.D., Lopes, A.C., Pimenta, A.M., Gea, A., Martinez-Gonzalez, M.A., and Bes-Rastrollo, M. (2017). Ultra-Processed Food Consumption and the Incidence of Hypertension in a Mediterranean Cohort: The Seguimiento Universidad de Navarra Project. *Am. J. Hypertens.* *30*, 358–366.
- Monteiro, C.A., Moubarac, J.C., Cannon, G., Ng, S.W., and Popkin, B. (2013). Ultra-processed products are becoming dominant in the global food system. *Obes. Rev.* *14* (Suppl 2), 21–28.
- Monteiro, C.A., Cannon, G., Moubarac, J.C., Levy, R.B., Louzada, M.L.C., and Jaime, P.C. (2018). The UN Decade of Nutrition, the NOVA food classification and the trouble with ultra-processing. *Public Health Nutr.* *21*, 5–17.
- Moss, M. (2013). *Salt, Sugar, Fat: How the Food Giants Hooked Us* (Random House).
- Moubarac, J.C. (2015). Ultra-Processed Food and Drink Products in Latin America: Trends, Impact on Obesity, Policy Implications (Pan American Health Organization), p. 60.
- Müller, M.J., Bosity-Westphal, A., Lagerpusch, M., and Heymsfield, S.B. (2012). Use of balance methods for assessment of short-term changes in body composition. *Obesity* (Silver Spring) *20*, 701–707.
- Ouwerkerk, R., Pettigrew, R.I., and Gharib, A.M. (2012). Liver metabolite concentrations measured with ¹H MR spectroscopy. *Radiology* *265*, 565–575.
- Poti, J.M., Mendez, M.A., Ng, S.W., and Popkin, B.M. (2015). Is the degree of food processing and convenience linked with the nutritional quality of foods purchased by US households? *Am. J. Clin. Nutr.* *101*, 1251–1262.
- Poti, J.M., Braga, B., and Qin, B. (2017). Ultra-processed food intake and obesity: what really matters for health-processing or nutrient content? *Curr. Obes. Rep.* *6*, 420–431.
- Pourhassan, M., Schautz, B., Braun, W., Gluer, C.C., Bosity-Westphal, A., and Müller, M.J. (2013). Impact of body-composition methodology on the composition of weight loss and weight gain. *Eur. J. Clin. Nutr.* *67*, 446–454.
- Racette, S.B., Schoeller, D.A., Luke, A.H., Shay, K., Hnilicka, J., and Kushner, R.F. (1994). Relative dilution spaces of 2H- and 18O-labeled water in humans. *Am. J. Physiol.* *267*, E585–E590.
- Roberts, P. (2008). *The End of Food* (Houghton Mifflin Harcourt Publishing Company).
- Robinson, E., Almiron-Roig, E., Rutters, F., de Graaf, C., Forde, C.G., Tudur Smith, C., Nolan, S.J., and Jebb, S.A. (2014). A systematic review and meta-analysis examining the effect of eating rate on energy intake and hunger. *Am. J. Clin. Nutr.* *100*, 123–151.
- Rolls, B.J. (2009). The relationship between dietary energy density and energy intake. *Physiol. Behav.* *97*, 609–615.
- SACN (2011). *Dietary Reference Values for Energy*, p. 225.
- Schatzker, M. (2015). *The Dorito Effect: The Surprising New Truth about Food and Flavor* (Simon & Schuster).
- Schnabel, L., Kesse-Guyot, E., Allès, B., Touvier, M., Srouf, B., Hercberg, S., Buscail, C., and Julia, C. (2019). Association between ultra-processed food consumption and risk of mortality among middle-aged adults in France. *JAMA Intern. Med.* <https://doi.org/10.1001/jamainternmed.2018.7289>.
- Schoeller, D.A. (1990). How accurate is self-reported dietary energy intake? *Nutr. Rev.* *48*, 373–379.
- Schoeller, D.A., Thomas, D., Archer, E., Heymsfield, S.B., Blair, S.N., Goran, M.I., Hill, J.O., Atkinson, R.L., Corkey, B.E., Foreyt, J., et al. (2013). Self-report-based estimates of energy intake offer an inadequate basis for scientific conclusions. *Am. J. Clin. Nutr.* *97*, 1413–1415.
- Schoffelen, P.F., and Westerterp, K.R. (2008). Intra-individual variability and adaptation of overnight- and sleeping metabolic rate. *Physiol. Behav.* *94*, 158–163.
- Schulte, E.M., Avena, N.M., and Gearhardt, A.N. (2015). Which foods may be addictive? The roles of processing, fat content, and glycemic load. *PLoS ONE* *10*, e0117959.
- Schulte, E.M., Smeal, J.K., and Gearhardt, A.N. (2017). Foods are differentially associated with subjective effect report questions of abuse liability. *PLoS ONE* *12*, e0184220.
- Shewfelt, R.L. (2017). *In Defense of Processed Food: It's Not Nearly as Bad as You Think* (Springer International Publishing).
- Simpson, S.J., and Raubenheimer, D. (2005). Obesity: the protein leverage hypothesis. *Obes. Rev.* *6*, 133–142.
- Small, D.M., and DiFeliceantonio, A.G. (2019). Processed foods and food reward. *Science* *363*, 346–347.
- Speakman, J.R. (1997). *Doubly Labelled Water: Theory and Practice* (Chapman & Hall).
- Stuckler, D., McKee, M., Ebrahim, S., and Basu, S. (2012). Manufacturing epidemics: the role of global producers in increased consumption of unhealthy commodities including processed foods, alcohol, and tobacco. *PLoS Med.* *9*, e1001235.
- Tarasuk, V., and Beaton, G.H. (1992). Day-to-day variation in energy and nutrient intake: evidence of individuality in eating behaviour? *Appetite* *18*, 43–54.
- Walhin, J.P., Richardson, J.D., Betts, J.A., and Thompson, D. (2013). Exercise counteracts the effects of short-term overfeeding and reduced physical activity independent of energy imbalance in healthy young men. *J. Physiol.* *591*, 6231–6243.
- Weaver, C.M., Dwyer, J., Fulgoni, V.L., 3rd, King, J.C., Leveille, G.A., MacDonald, R.S., Ordovas, J., and Schnakenberg, D. (2014). Processed foods: contributions to nutrition. *Am. J. Clin. Nutr.* *99*, 1525–1542.

STAR★METHODS

KEY RESOURCES TABLE

REAGENT or RESOURCE	SOURCE	IDENTIFIER
Biological Samples		
Human Blood and Urine Samples	This paper	N/A
Chemicals, Peptides, and Recombinant Proteins		
Doubly Labeled Water (DLW)	Sigma Aldrich	Product #Q46398; https://www.sigmaaldrich.com/chemistry/stable-isotopes-isotec/stable-isotope-products.html?TablePage=104174112
Critical Commercial Assays		
FGF21, Leptin PYY active Ghrelin	Mesoscale	Catalog#: K151ACL-1; https://www.mesoscale.com/en/products/u-plex-metabolic-group-1-human-assays-k151acl/
Active GIP active GLP1	Meso Scale Discovery	Catalog#: K151ACL-2; https://www.mesoscale.com/en/products/u-plex-metabolic-group-1-human-assays-k151acl/
Glucagon	Mercodia	Catalog#: 10-1271-01; https://mercodia.se/mercodia-glucagon-elisa
Adiponectin Resistin PAI-1	Millipore-Sigma	Catalog#: HADCY MAG-61K-03; http://www.emdmillipore.com/US/en/product/MILLIPLEX-MAP-Human-Adipocyte-Magnetic-Bead-Panel-Endocrine-Multiplex-Assay,MM_NF-HADCY MAG-61K
Total GIP	Mesoscale	Catalog#: K151ACL-1; https://www.mesoscale.com/en/products/u-plex-metabolic-group-1-human-assays-k151acl/
C-peptide	Mercodia	Catalog#: 10-1136-01; https://mercodia.se/mercodia-c-peptide-elisa
Deposited Data		
Individual Subject Data	This paper	https://osf.io/rx6vm/
Software and Algorithms		
ProNutra Version 3.4	Viocare	https://www.viocare.com/pronutra.html
REDCap Version 8.5.8	REDCap	https://www.niddk.nih.gov/
SAS version 9.4	SAS Institute	https://www.sas.com/en_us/software/base-sas.html
Other		
Actigraph (Accelerometers)	Actigraph, LLC	https://actigraphcorp.com/actigraph-wgt3x-bt/
Continuous Glucose Monitoring	Dexcom	https://www.dexcom.com/dexcom-g4-platinum-share
Dual-Energy X-ray Absorptiometry	General Electric Lunar iDXA	https://www.gehealthcare.com/en/products/bone-and-metabolic-health/bone-and-metabolic-health
Scale	Welch Allyn Scale-Tronix 5702	https://www.welchallyn.com/en/products/categories/physical-exam/scales/portable/scale-tronix-portable-scales.html
Magnetic Resonance Spectroscopy	Siemens Medical Solutions USA	https://www.siemens-healthineers.com/en-us/magnetic-resonance-imaging/3t-mri-scanner/magnetom-verio
Monark 839E Electronic Ergometer	HealthCare International, Inc	http://www.hcfitness.com/Monark-839e-Testing-Bike-Ergometer
Respiratory Chamber	This paper	N/A
Clinical Trial Registration	ClinicalTrials.gov	NCT03407053

CONTACT FOR REAGENT AND RESOURCE SHARING

Further information and requests for resources and reagents should be directed to and will be fulfilled by the Lead Contact, Kevin Hall (kevinh@nih.gov).

EXPERIMENTAL MODEL AND SUBJECT DETAILS

The study protocol was approved by the Institutional Review Board of the National Institute of Diabetes & Digestive & Kidney Diseases (ClinicalTrials.gov Identifier NCT03407053). Eligible subjects were between 18-50 years old with a body mass index

(BMI) > 18.5 kg/m² and were weight-stable (< ± 5% over the past 6 months). Volunteers were excluded if they had anemia, diabetes, cancer, thyroid disease, eating disorders or other psychiatric conditions such as clinical depression or bipolar disorder. Volunteers with strict dietary concerns, including food allergies or adherence to particular diets (e.g., vegetarian, vegan, kosher, etc.) were also excluded.

Subjects were told that the purpose of the study was to learn about how a processed versus unprocessed diet affects the amount of food they eat, glucose tolerance, hormone levels, markers of inflammation, body weight and composition, energy expenditure, and liver fat. The subjects were told that this was not a weight loss study. They wore loose fitting clothing throughout the study and were blinded to daily weight and continuous glucose measurements.

METHOD DETAILS

Diets

The diets were designed and analyzed using ProNutra software (version 3.4, Viocare, Princeton, NJ) with nutrient values derived from the USDA National Nutrient Database for Standard Reference, Release 26 and the USDA Food and Nutrient Database for Dietary Studies, 4.0. The ultra-processed and unprocessed meals were provided on 7-day rotating menus (see the [Supplemental Information](#) for detailed menu information). Foods and beverages were categorized according to the NOVA system ([Monteiro et al., 2018](#)).

Bottled water and snacks representative of the prevailing diet were provided *ad libitum* throughout the day in snack boxes located in the subjects' inpatient rooms. Meals were presented to the subjects approximately as shown in the photographs included in the [Supplemental Information](#) with instructions to eat as much or as little as desired. Subjects were given up to 60 min to eat and when they finished each meal a nurse removed the meal and documented the meal duration. Remaining food and beverages were identified and weighed by nutrition staff to calculate the amount of each food consumed and the nutrient and metabolizable energy intake were calculated using the nutrition software described above. Meal eating rate was calculated by dividing the measured food intake by the meal duration.

Subjective Assessment of Appetite, Sensory, and Palatability

During each diet period, subjects were asked to complete appetitive surveys over the course of three separate days implemented using REDCap (Research Electronic Data Capture) electronic data capture tools ([Harris et al., 2009](#)). The surveys comprised visual analog scales (VAS) in response to four questions: 1) "How hungry do you feel right now"? 2) "How full do you feel right now"? 3) "How much do you want to eat right now"? and 4) "How much do you think you can eat right now"? Subjects answered the questions using 100-point VAS line scale anchored at 0 and 100 by descriptors such as "not at all" and "extremely." The questions were answered immediately prior to each meal and at least every 30 to 60 min over the 2-3 hours following the consumption of each meal. We calculated the mean values of the responses adjusted for the energy consumed using multiple linear regression.

On the last two days of the first diet period and the first two days of the second diet period, subjects were asked to complete another survey to assess the palatability and familiarity of the meals provided. The questions were embedded among distracter "mood" ratings (e.g., alert, happy, and clear-headed). Survey items were completed after the first bite of the meal.

Body Weight and Composition

Daily body weight measurements were performed at 6am each morning after the first void (Welch Allyn Scale-Tronix 5702; Skaneateles Falls, NY, USA). Subjects wore hospital-issued top and bottom pajamas which were pre-weighed and deducted from scale weight. Body composition measurements were performed at baseline and weekly using dual-energy X-ray absorptiometry (General Electric Lunar iDXA; Milwaukee, WI, USA). Changes in body energy stores were calculated using the measured changes in body fat and fat-free mass along with the corresponding energy densities of 9300 kcal/kg and 1100 kcal/kg, respectively. Liver fat measurements were performed using T1 and T2 corrected proton magnetic resonance spectroscopy with a breath-holding technique in a 3T scanner (MAGNETOM Verio; Siemens, Tarrytown, NY) ([Ouwkerk et al., 2012](#)).

Physical Activity Monitoring

Overall physical activity was quantified by calculating average daily metabolic equivalents (MET) using small, portable, pager-type accelerometers (Actigraph, Pensacola, FL) sampled at 80 Hz and worn on the hip ([Freedson et al., 1998](#)).

Energy Expenditure via Respiratory Chamber

All chamber measurement periods were > 23 hours and we extrapolated the data to represent 24hr periods by assuming that the mean of the measured periods was representative of the 24hr period. Energy expenditure was calculated as follows:

$$EE_{chamber}(\text{kcal}) = 3.88 \times VO_2(\text{L}) + 1.08 \times VCO_2(\text{L}) - 1.57 \times N(\text{g}),$$

where VO_2 and VCO_2 were the volumes of oxygen consumed and carbon dioxide produced, respectively, and N was the 24hr urinary nitrogen excretion measured by chemiluminescence (Antek MultiTek Analyzer, PAC, Houston, TX).

Sleeping energy expenditure was determined by the lowest energy expenditure over a continuous 180 min period between the hours of 00:00-06:00 ([Schoffelen and Westerterp, 2008](#)). Sedentary energy expenditure and physical activity expenditure were defined as previously described ([Hall et al., 2016](#)).

Energy Expenditure via Doubly Labeled Water

Subjects drank from a stock solution of $^2\text{H}_2\text{O}$ and H_2^{18}O water where 1 g of $^2\text{H}_2\text{O}$ (99.99% enrichment) was mixed with 19 g of H_2^{18}O (10% enrichment). An aliquot of the stock solution was saved for dilution to be analyzed along with each set of urine samples. The water was weighed to the nearest 0.1 g into the dosing container. The prescribed dose was 1.0 g per kg body weight and the actual dose amounts were entered in a dose log. Spot urine samples were collected daily. Isotopic enrichments of urine samples were measured by isotope ratio mass spectrometry. The average CO_2 production rate ($r\text{CO}_2$) were estimated from the rate constants describing the exponential disappearance of the labeled ^{18}O and D water isotopes (k_{O} and k_{D}) in repeated spot urine samples collected over several days and were corrected for previous isotope doses (Bhutani et al., 2015). We used the parameters of Racette et al. (1994) with the weighted dilution space calculation, R_{dil} , proposed by Speakman (1997):

$$r\text{CO}_2 = (N / 2.078)(1.007k_{\text{O}} - 1.007R_{\text{dil}}k_{\text{D}}) - 0.0246r_{\text{GF}}$$

$$r_{\text{GF}} = 1.05(1.007k_{\text{O}} - 1.007R_{\text{dil}}k_{\text{D}})$$

$$R_{\text{dil}} = [(N_{\text{D}}/N_{\text{O}})_{\text{ave}} \times n + 1.034 \times 255] / (n + 255),$$

where $(N_{\text{D}} / N_{\text{O}})_{\text{ave}}$ is the mean of the ratio of the body water pool sizes $N_{\text{D}} / N_{\text{O}}$ from the n subjects. In cases where the individual values for the total body water, N , differed by > 5% from that calculated as 73% of the fat-free mass determined by DXA within a few days of the dose, N was adjusted to agree with the DXA data.

The average total energy expenditure (EE_{DLW}) from the DLW measurement of $r\text{CO}_2$ was calculated as:

$$\text{EE}_{\text{DLW}}(\text{kcal}) = \left[\frac{3.85}{\text{RQ}} + 1.075 \right] \times r\text{CO}_2(\text{L}),$$

where RQ was calculated by adjusting the respiratory chamber RQ measurements for the overall degree of energy imbalance of each subject as determined by body composition changes during the DLW period as previously described (Hall et al., 2019).

Continuous Glucose Monitoring

Subjects wore the Dexcom G4 Platinum (Dexcom, San Diego, CA, USA) continuous glucose monitor (CGM) daily during the inpatient stay. The device consisted of a small sensor, a transmitter, and a hand-held receiver. The sensor was inserted subcutaneously in the lower abdomen to measure interstitial glucose concentrations every 5 min which were transmitted to the receiver. Finger stick calibrations were required at insertion as well as each morning and night. The sensor was changed every 7 days. Subjects were blinded to their glucose readings. The CGM was removed during MRI/MRS procedures and DXA scans. All the data was downloaded at the end of the inpatient stay.

QUANTIFICATION AND STATISTICAL ANALYSIS

This study was powered to detect a difference in mean *ad libitum* energy intake over each 14-day test diet period (the primary endpoint) of 125–150 kcal/d in 20 subjects with probability (power) of 0.8 with a Type I error probability of 0.05. This sample size calculation was informed by previous studies measuring day to day variability of *ad libitum* energy intake having a standard deviation of about 500–600 kcal/d (Bray et al., 2008; Edholm et al., 1970; Tarasuk and Beaton, 1992). Using the conservative assumption that within-subject energy intake correlations were zero, over the 14-day diet period each subject was expected to have a mean energy intake with a standard error of about 130–160 kcal/d and the mean energy intake difference between the study diets was therefore estimated to have a standard error of about 190–230 kcal/d.

Statistical analyses were performed using SAS (version 9.4; SAS Institute, Cary, NC, USA). The baseline data are presented as mean \pm SE. Data were analyzed by analysis of variance (PROC GLM, SAS). The data tables and figures present least-squares mean \pm SE and paired, two-sided t tests were used to compare the diet groups. Significance was declared at $p < 0.05$.

ADDITIONAL RESOURCES

ClinicalTrials.gov Identifier NCT03407053.

DATA AND SOFTWARE AVAILABILITY

Individual subject data and code for statistical analysis are available for download at Open Science Framework: <https://osf.io/rx6vm/>.

Update 1 of 2

Cell Metabolism

Volume 30, Issue 1, 2 July 2019, Page 226

DOI: <https://doi.org/10.1016/j.cmet.2019.05.020>

Ultra-Processed Diets Cause Excess Calorie Intake and Weight Gain: An Inpatient Randomized Controlled Trial of *Ad Libitum* Food Intake

Kevin D. Hall,* Alexis Ayuketah, Robert Brychta, Hongyi Cai, Thomas Cassimatis, Kong Y. Chen, Stephanie T. Chung, Elise Costa, Amber Courville, Valerie Darcey, Laura A. Fletcher, Ciaran G. Forde, Ahmed M. Gharib, Juen Guo, Rebecca Howard, Paule V. Joseph, Suzanne McGehee, Ronald Ouwerkerk, Klaudia Raisinger, Irene Rozga, Michael Stagliano, Mary Walter, Peter J. Walter, Shanna Yang, and Megan Zhou

*Correspondence: kevinh@nih.gov

<https://doi.org/10.1016/j.cmet.2019.05.020>

(Cell Metabolism 30, 67–77.e1–e3; July 2, 2019)

In the preparation of the manuscript, the authors made several typographical errors. Author Ronald Ouwerkerk was erroneously listed as Robert Ouwerkerk. In Table 1, the units for non-beverage energy density should be “kcal/g” and not “kcal/day.” The fraction of insoluble to total fiber in the ultra-processed versus unprocessed diet was inverted in the main text as “~77% versus 16%, respectively,” when it should have read, “~16% versus 77%, respectively.” The legend for Figure 1 erroneously indicated that subjects were admitted to more than one metabolic ward. This has been revised as follows: “Twenty adults were confined to the metabolic ward at the NIH Clinical Center.” Finally, in the Supplemental Information the photographs corresponding to the unprocessed breakfasts on days 4 and 7 were swapped. These errors have now been corrected in the article online. The authors apologize for the errors and any inconvenience that may have resulted.



Update 2 of 2

Cell Metabolism

Volume 32, Issue 4, 6 October 2020, Page 690

DOI: <https://doi.org/10.1016/j.cmet.2020.08.014>

Correction

Ultra-Processed Diets Cause Excess Calorie Intake and Weight Gain: An Inpatient Randomized Controlled Trial of *Ad Libitum* Food Intake

Kevin D. Hall,* Alexis Ayuketah, Robert Brychta, Hongyi Cai, Thomas Cassimatis, Kong Y. Chen, Stephanie T. Chung, Elise Costa, Amber Courville, Valerie Darcey, Laura A. Fletcher, Ciaran G. Forde, Ahmed M. Gharib, Juen Guo, Rebecca Howard, Paule V. Joseph, Suzanne McGehee, Ronald Ouwerkerk, Klaudia Raisinger, Irene Rozga, Michael Stagliano, Mary Walter, Peter J. Walter, Shanna Yang, and Megan Zhou

*Correspondence: kevinh@nih.gov

<https://doi.org/10.1016/j.cmet.2020.08.014>

(Cell Metabolism 30, 67–77.e1–e3; July 2, 2019)

We recently noticed an error in the documented diet order in the individual meal data sheets for one of our study subjects. This error did not affect the primary outcome of the study (diet differences in total daily *ad libitum* energy intake) or the snack intake data, but the error did affect the reported diet differences between breakfast, lunch, and dinner.

Specifically, the ultra-processed diet resulted in increased energy intake at breakfast (144 ± 39 kcal/day; $p = 0.0014$), lunch (248 ± 39 kcal/day; $p < 0.0001$), and dinner (108 ± 41 kcal/day; $p = 0.017$) as compared to the unprocessed diet. Carbohydrate intake was significantly increased during the ultra-processed diet at breakfast (76 ± 22 kcal/day; $p = 0.002$), lunch (139 ± 21 kcal/day; $p < 0.0001$), and dinner (73 ± 25 kcal/day; $p = 0.009$). Fat intake was significantly increased during the ultra-processed diet at breakfast (69 ± 14 kcal/day; $p < 0.0001$) and lunch (130 ± 17 kcal/day; $p < 0.0001$), and tended to be increased at dinner (26 ± 13 kcal/day; $p = 0.06$). Protein intake was significantly lower during the ultra-processed diet at lunch (-22 ± 6 kcal/day; $p = 0.0013$) but was not significantly different from other meals ($p > 0.17$).

The authors apologize for this error and any inconvenience that may have resulted.

